

# FLOORPLANS

# GROUND

Office

5,780 SQ FT

Reception

3,735 SQ FT

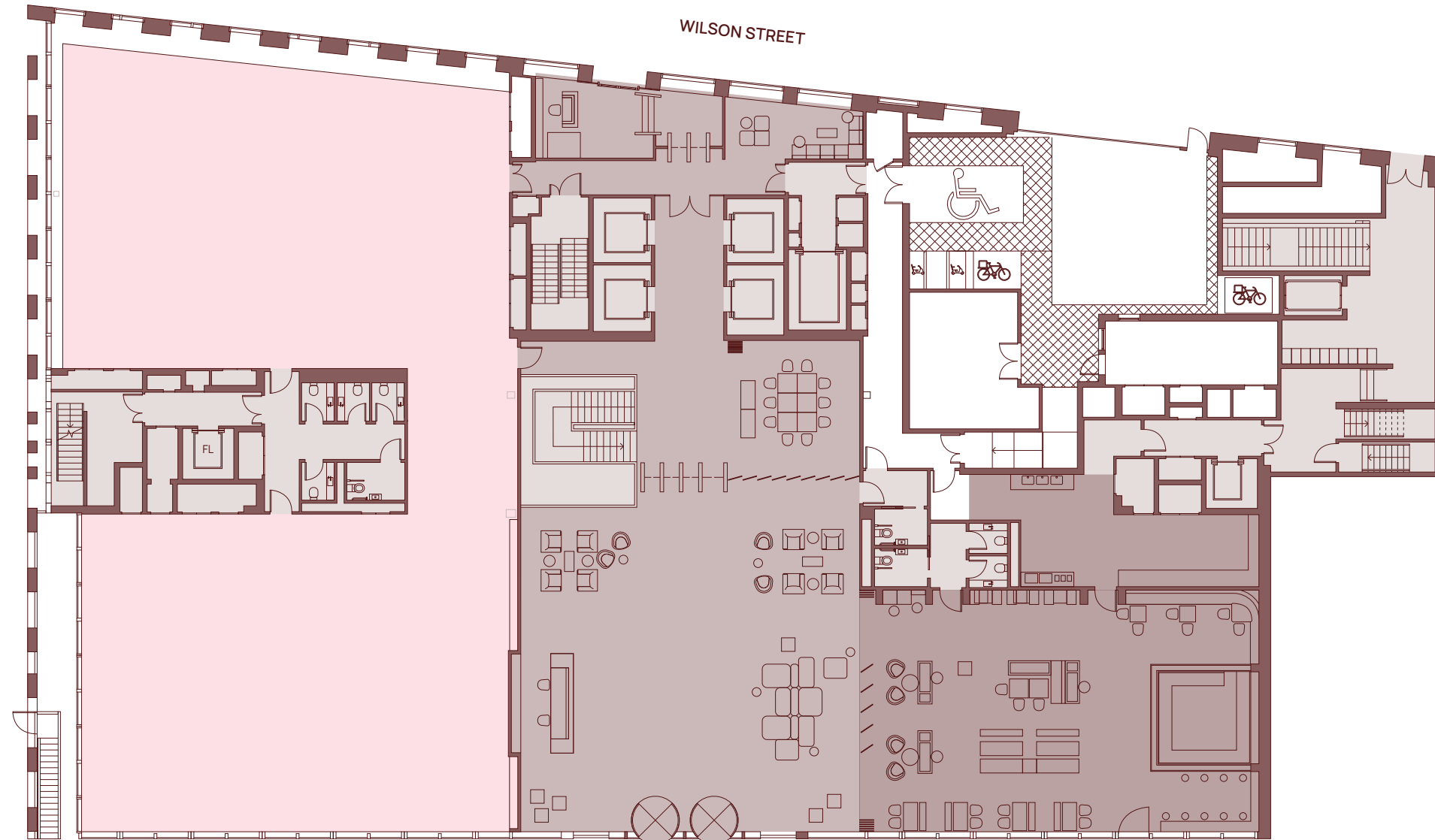
Café

2,336 SQ FT

All measurements are subject to remeasurement upon completion of works.



← N



- Office
- Core
- Reception
- Café
- PL Passenger lift
- GL Goods lift
- FL Fire lift
- CL Cycle lift

FINSBURY SQUARE

# FLOOR 1

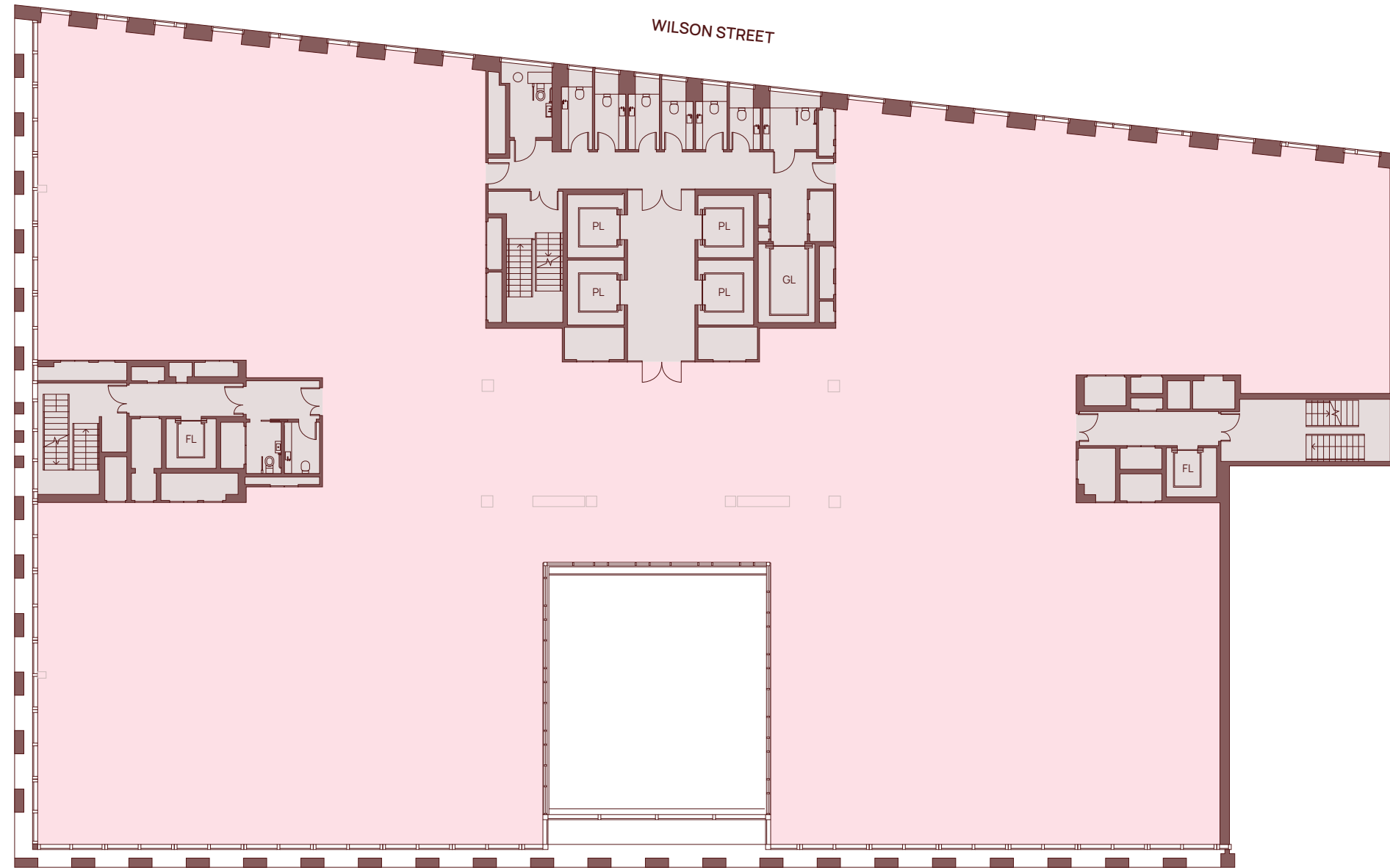
Office

14,704 SQ FT

All measurements are subject to remeasurement upon completion of works.



← N



- Office
- Core
- PL Passenger lift
- GL Goods lift
- FL Fire lift

FINSBURY SQUARE

# FLOOR 2

Office

15,995 SQ FT

All measurements are subject to remeasurement upon completion of works.



← N



- Office
- Core
- PL Passenger lift
- GL Goods lift
- FL Fire lift

# FLOOR 3

Office

16,017 SQ FT

All measurements are subject to remeasurement upon completion of works.



← N



- Office
- Core
- PL Passenger lift
- GL Goods lift
- FL Fire lift

FINSBURY SQUARE

# FLOOR 4

Office

16,017 SQ FT

All measurements are subject to remeasurement upon completion of works.



← N



- Office
- Core
- PL Passenger lift
- GL Goods lift
- FL Fire lift

FINSBURY SQUARE

# FLOOR 5

Office

16,028 SQ FT

All measurements are subject to remeasurement upon completion of works.



← N



- Office
- Core
- PL Passenger lift
- GL Goods lift
- FL Fire lift

FINSBURY SQUARE

# FLOOR 6

Office

15,339 SQ FT

Private Terrace

1,012 SQ FT

All measurements are subject to  
remeasurement upon completion  
of works.



← N



- Office
- Core
- Private terrace
- PL Passenger lift
- GL Goods lift
- FL Fire lift

FINSBURY SQUARE



# FLOOR 7

Office

13,380 SQ FT

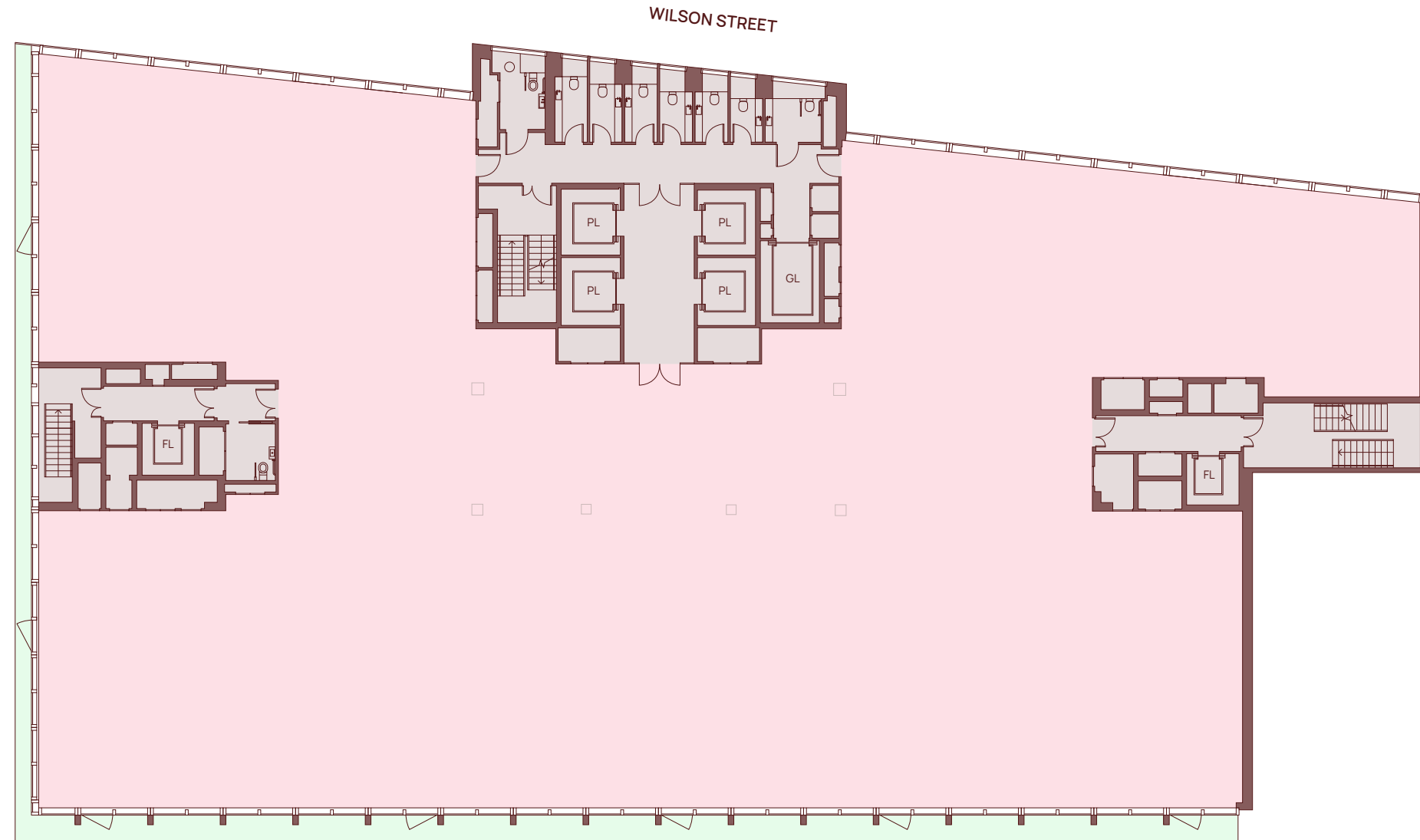
Private Terrace

1,830 SQ FT

All measurements are subject to remeasurement upon completion of works.



← N



- Office
- Core
- Private terrace
- PL Passenger lift
- GL Goods lift
- FL Fire lift

FINSBURY SQUARE

# FLOOR 8

Office

1,270 SQ FT

Private Terrace

1,830 SQ FT

Winter Garden

646 SQ FT

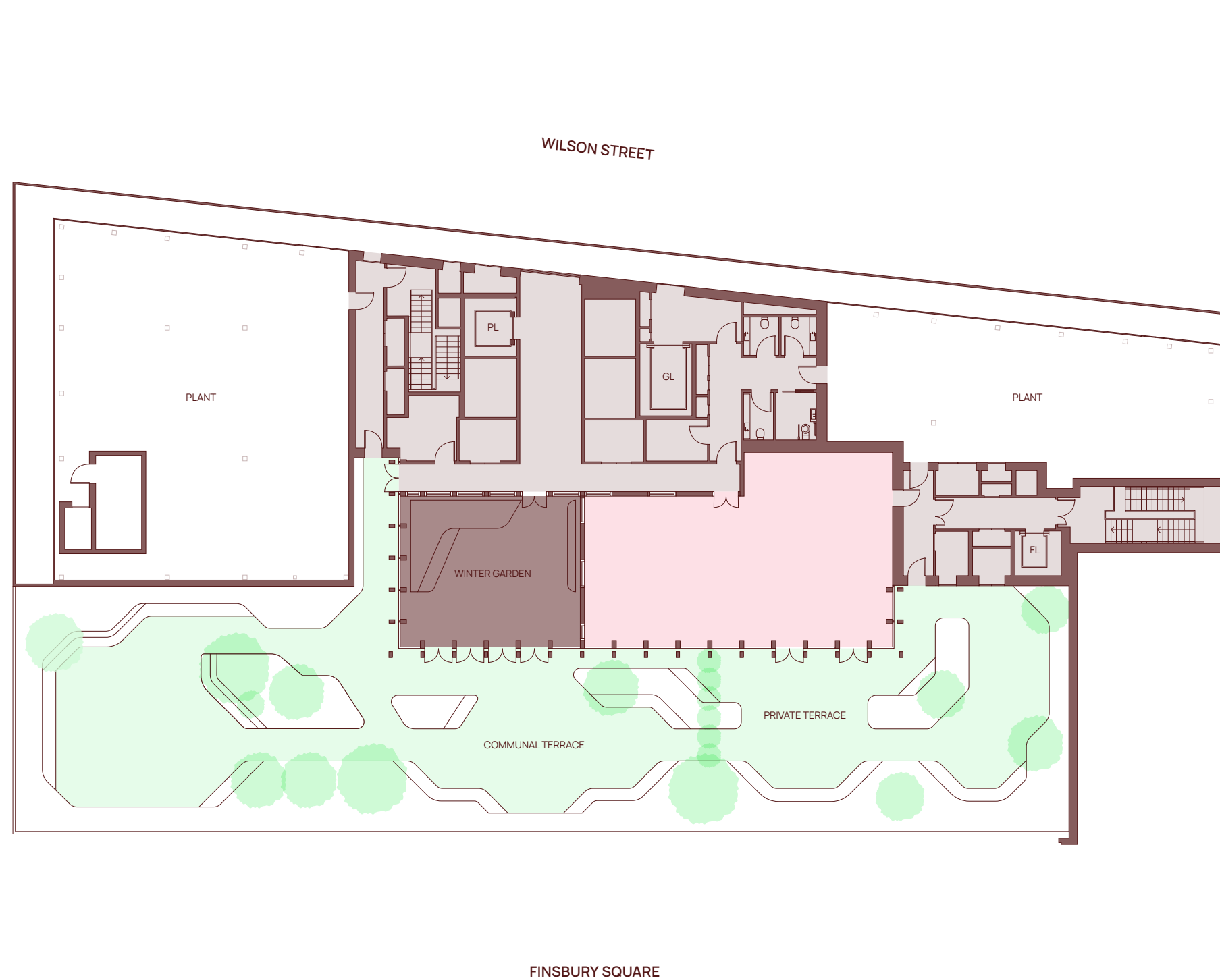
Communal Terrace

3,735 SQ FT

All measurements are subject to remeasurement upon completion of works.



← N



- Office
- Core
- Outdoor space
- Winter Garden
- PL Passenger lift
- GL Goods lift
- FL Fire lift

# LOWER GROUND

Office  
7,599 SQ FT

Terrace  
732 SQ FT

Wellness Area  
398 SQ FT

End of Trip  
5,823 SQ FT

All measurements are subject to  
remeasurement upon completion  
of works.



← N



- Office
- Core
- Facilities
- Wellness area
- Terrace
- PL Passenger lift
- GL Goods lift
- FL Fire lift

FINSBURY SQUARE